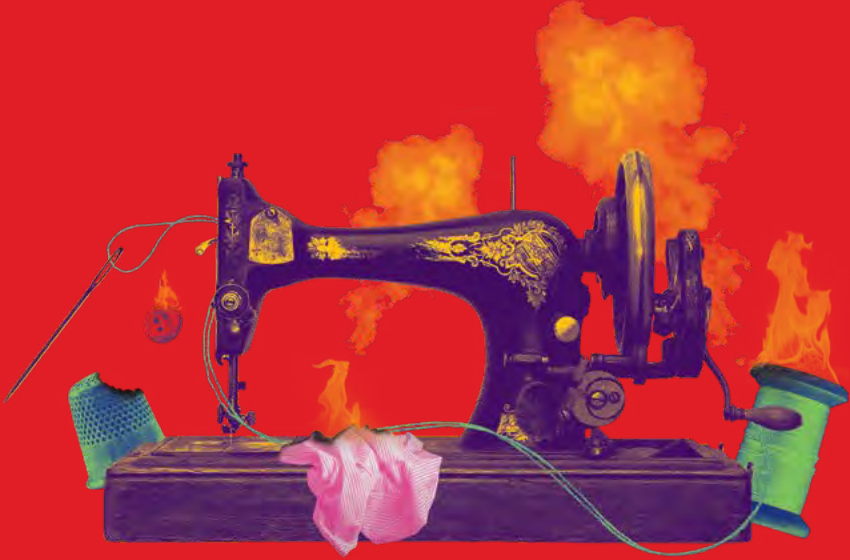


GERALD SHEFF AND SHANITHA KACHAN PRESENT

# THE GREAT DIVIDE

A CANADIAN PREMIERE

*Based on the Triangle Shirtwaist factory fire in 1911, this play looks at the immigrant and refugee experience and those who paid the ultimate price for seeking opportunity and a new life across the ocean.*



APR 30  
— MAY 15

**WRITTEN BY** Alix Sobler **DIRECTED BY** Avery Saltzman  
**WINNER OF THE** 2015 Canadian Jewish Playwriting Competition

GREENWIN THEATRE (5040 YONGE STREET)  
MERIDIAN ARTS CENTRE

SUPPORTING SPONSORS

THE 2021/2022 SEASON IS  
GENEROUSLY SUPPORTED BY THE



UJA FEDERATION  
of Greater Toronto



Fondation  
Azrieli  
Foundation

A MEMBER OF

KULTURA  
COLLECTIVE  
קולטורה

WE ACKNOWLEDGE THE SUPPORT OF THE



Canada Council  
for the Arts  
Conseil des arts  
du Canada

2021/22

HAROLD GREEN  
JEWISH THEATRE COMPANY

# Goldstein Financial Consultants

*“Creative Ideas in Financial Planning”*

is pleased to sponsor

## The Great Divide

In support of  
The Harold Green Jewish Theatre

**Mutual Fund Capital Gains  
qualify for special tax treatment as part  
of a charitable gifting program.**

*Let us show you how you can still support  
your favourite charities while reducing taxes.*

*A diversified portfolio of Mutual Funds  
could be helpful to your charitable and estate planning.*

**For more  
information,  
Please call Sonny  
at 416-221-0060**



**Sonny Goldstein, CFP President**

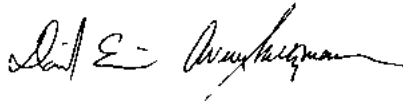
MUTUAL FUNDS PROVIDED BY GOLDSTEIN FINANCIAL INVESTMENTS INC.  
SALES COMMISSIONS, TRAILING COMMISSIONS, MANAGEMENT FEES AND EXPENSES ALL MAY BE  
ASSOCIATED WITH MUTUAL FUND INVESTMENTS. MUTUAL FUNDS ARE NOT GUARANTEED; THEIR  
VALUES CHANGE FREQUENTLY AND PAST PERFORMANCE MAY NOT BE REPEATED. GAINS OR LOSSES  
MAY OCCUR. READ A FUND'S PROSPECTUS CAREFULLY BEFORE INVESTING.

# ARTISTIC DIRECTORS' MESSAGE

---

Welcome back to LIVE theatre. Thank you for patience and loyalty as we continue the journey in sharing the Jewish story. You may have seen theatre online, but only in live theatre can you experience it!

In *The Great Divide* we witness the tragedy of young immigrants having their lives cut short. Within the horrible event of the Triangle Shirtwaist Factory fire, some good comes through with the establishment of Labour Unions fighting for fair and better lives. We have gone through more than two years of having our lives put on hold, re-evaluating what's important. Thankfully, we are still here. However, life can change on a dime. No one knows their future fate. All we can do is live the life we have with open hearts, striving to make a difference and to matter. The characters in *The Great Divide* didn't get that chance, gratefully we do.



David Eisner & Avery Saltzman

**CO-ARTISTIC DIRECTORS**

Harold Green Jewish Theatre Company

---

# PRESIDENT'S MESSAGE

---

At the Harold Green Jewish Theatre Company, we tell Jewish stories, stories that need to be told and retold. We've been saying this for fifteen years. There is a need to bear witness to history. Right now, we see this need playing out in Europe. There is new meaning in the phrase "lest we forget". *The Great Divide* reinforces the impact of telling a story over and over again. The emotions generated are profound. And that is why we believe in theatre.

It's been a long time coming, but on behalf of the board of directors, welcome back! We look forward to seeing you often as, together, we all experience the magic of live theatre.



Dene Cohen and Danny Webber

**CO-PRESIDENTS**

Harold Green Jewish Theatre Company

# DIRECTOR'S NOTES

Two and a half, almost three years ago, I started reading and preparing to direct *The Great Divide*. A play about an immigrants, a play about self- discovery, a play about who we are as people. What is a person really? A name? A body? An idea?

I started to navigate it's myriad of themes and losing myself in the beauty of its journey. Then Covid hit and it was 2 years until I picked it up again. I was reading a different play.

Through the pandemic hundred's of thousands of people got ill, thousands died. The war in Ukraine remains rampant and the immigrant story is again in our headlines. Thousands of people perish and all we know is that they died. We don't stop and recognize that each had a family. Children, parents, loved ones, each had a name. The big picture that we all at one time face. This is *The Great Divide*. A play about identity, living life to it's fullest and what it means to be present in our short time on earth.

I love this play. I have come to know it's simplicity, it's deep rooted honesty and in the most difficult of situation it's beauty. I hope you as an audience have an experience that only live theatre can bring.



Avery Saltzman

**DIRECTOR**

*The Great Divide*

## WE WOULD LIKE TO THANK OUR SPONSORS FOR *THE GREAT DIVIDE*.

ABOVE TITLE SPONSORS

**GERALD SHEFF AND SHANITHA KACHAN**

SUPPORTING SPONSORS

**THE JAY AND BARBARA HENICK FAMILY FOUNDATION**

SET SPONSORS



WE ACKNOWLEDGE  
THE SUPPORT OF THE



Canada Council  
for the Arts

Conseil des arts  
du Canada

# CAST & CREW

---

HAROLD GREEN  
JEWISH THEATRE COMPANY

PRESENTS

# THE GREAT DIVIDE

Written By

**ALIX SOBLER**

Starring

**MAIRI BABB, DARRIN BAKER, SARAH GIBBONS,  
TAL GOTTFRIED, and LAWRENCE LIBOR**

Assistant Director .....	OLIVIA DANIELS
Set Designer .....	BRIAN DUDKIEWICZ
Assistant Set Designer .....	RYAN CORMACK
Sound Designer .....	LYON SMITH
Costume Designer .....	ALEX AMINI
Assistant Costume Designer .....	CARMEN AMINI
Lighting Designer .....	SIOBHÁN SLEATH
Production Manager .....	CRYSTAL SALVERDA
Stage Manager .....	BARBARA MCLEAN WRIGHT
Assistant Stage Manager .....	KATIE FITZ-GERALD

Directed by

**AVERY SALTZMAN**

*THE GREAT DIVIDE was first performed at the Finborough Theatre, London. Neil McPherson, Artistic Director*

*THE GREAT DIVIDE is produced by special arrangement with THE GERSH AGENCY, 41 Madison Avenue, 33rd Floor, New York, NY 10010*

---

**THE GREAT DIVIDE IS PERFORMED WITHOUT AN INTERMISSION**

---

## SPECIAL THANKS TO

Gerald Sheff and Shanitha Kachan, The Jay and Barbara Hennick Family Foundation, Aaron Bensoussan, Jodi Block, The Blyth Festival, Jacqui Burke, Canadian Stage Prop Department, Rich Caplan, Zoe Carpenter, Adrielle Chiesa, Rachael Dean, The Gersh Agency, Cary Green, Leah Hamos, Lindsay Hepburn, JIAS, Andrew Krystal, Jordan Leuthel, Greg Neely, Sandie Newton, Samantha Niaraki, Cantor Charles Osborne, Chynah Philadelphia, Chris Rolls, Ray Salverda, Mary Spyraakis, Courtney Voyce, Teri Yeung, Mike Yorke.

# BIOS

---



## **MAIRI BABB** (Sadie/Sophie/Clara)

Mairi is thrilled to be writing about herself in the third person after more than two years away from live theatre! She is also incredibly grateful to be making her Harold Green debut in this beautiful show finally happening after the great pandemic pause. Some of her favourite past shows include: *War Horse* (Mirvish/North America/Tokyo), *Spider's Web* (Aquarius), *Baskerville* (Lighthouse), *The Tempest* (RMTC), *Brief Encounter* (VP/RMTC), *The Rocky Horror Show* (RMTC/CanStage), *Guys and Dolls* (RMTC/Citadel/TC), *Space Opera Zero* (Eldritch), *Cymbeline* (Shakespeare Bash'd), *The Gift of the Magi* (Orangeville). Directing credits include: *february - a love story* (Sudden Spark), *Early August* (Lighthouse), *Diminished* (Trafalgar 24/Driftwood). Mairi has also appeared in *Run The Burbs*, *Good Witch*, *Take Note*, and *What We Do In The Shadows*. For my intrepid mum who, like Clara, never had "patience for talk": ISALY and an extra one.



## **DARRIN BAKER** (Max etc.)

Darrin's Broadway credits include: *Sunset Blvd*, *The Scarlet Pimpernel*, *Footloose*, *Wonderful Town*, *Laughing Room Only* (opposite Jackie Mason) and *Tarzan*. Darrin has worked at many of Canada and America's top regional theatres including: The Royal Alex, The Cincinnati Playhouse, Actor's Theater of Louisville, Portland Center Stage, The St Louis Muny, Utah's Pioneer Theatre, Pantages Theater in LA to name a few. His countless television and film credits include guest starring, supporting and recurring roles on *Law and Order*, *The Good Doctor*, *Suits*, *Designated Survivor*, *Workin' Moms*, *Spotlight*, *Kodachrome*, *The Glass Castle*, *My Spy* and many many more. He will be seen this season in supporting recurring roles on both Netflix's *Painkiller* and Apple TV's *Five Days at Memorial* as well as appearing alongside Kevin Hart and Woody Harrelson in *The Man from Toronto*. Darrin is thrilled to be back at HGJT where he loved playing Mendel in *FALSETTOS* (Toronto Critics Award for Best Actor, and Dora Nominated for Best Actor) and *Stars Of David*. Darrin's best and favorite production is his daughter Ruby!

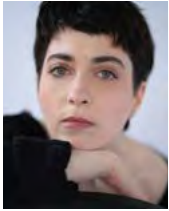


## **SARAH GIBBONS** (Manya)

Sarah is a queer non-binary, actor, singer, vocal coach, songwriter & music producer. Last Summer, Sarah played Mary Snow in The Guild Theatre's *Salt Water Moon* at The Guild Park & Gardens in Scarborough. The production then toured to the St. Lawrence Shakespeare Festival. Credits Include: Ensemble in the Canadian Premiere of *A Gentleman's Guide to Love & Murder* (Stagewest), Dot/Marie in *Sunday in The Park with George* (Scottish Premiere), Shapiro in *Jacob Two Two* (Young Peoples Theatre-Dora Nomination), Cordelia in *Falsettos* (The Musical Stage Company/HGJT) Abigail Williams in *Obeah Opera* (Nightwood Theatre) and Louisa in *The Sound of Music* (National Arts Centre). Sarah is a member of the Vocal Faculty at Randolph College and holds their Masters in Music Theatre from the Royal Conservatoire of Scotland. When they aren't working in Theatre, Sarah can be found writing & producing their own music under the artist name saarrahtonin. Shout outs to Bailey for all your love and support. <3

# BIOS

---



## TAL GOTTFRIED (Rosa)

Tal is an Israeli-born Canadian actor who feels grateful to be telling this story. You may have heard her playing the role of Izzy in Harold Green Jewish Theatre's radio adaption of the play *Crossing Delancey*. Theatre credits include: *The Secret Annex* (Royal Manitoba Theatre Centre), *Willowbunch* (SummerWorks), *For This Moment Alone* (Theatre Aquarius), *A View from the Bridge* (Segal Centre), *A Month in the Country* (Soulpepper). Film/TV credits include: *Game Time Comedy* (Suntola Films), *Private Eyes* (Global/EOne), *12 Monkeys* (SyFy/Universal), *Dan for Mayor* (CTV/Comedy Network). Tal studies regularly at LS&CO Acting Studios. She is a graduate of George Brown Theatre School.



## LAWRENCE LIBOR (Jacob/Avram)

After a 2-year hiatus, Lawrence couldn't think of a better way to return to live theatre than with the Harold Green family! Originally from the UK, Lawrence has enjoyed a varied career in both countries. Theatre: Eugene in *Brighton Beach Memoirs* (Harold Green), Guy in *ONCE* (Citadel Theatre), Ernst in *Cabaret* (the Grand Theatre), *Robin Hood* (Ross Petty Panto), Cover Johnny/ Tunny/ St Jimmy in *American Idiot* (WEST END and UK tour). Film/TV Credits include: *Take Note* (NBC), *Star Trek: Strange New Worlds* (Paramount), *Frankie Drake* (CBC), *Teacup Travels* (CBBC).



## AVERY SALTZMAN (Director)

Hard to believe but this month marks 44 years that Avery has been in the Arts. From actor to director and now for the past 15 years as the co-artistic director of The Harold Green Jewish Theatre Company – theatre has been his calling and passion. With too many shows to mention – Avery has performed on Broadway, Off-Broadway, Covent Garden, London's West End, many regionals throughout the United States and most theatres in Canada.



## ALIX SOBLER (Playwright)

Alix Sobler is a writer and performer from New York. Her plays have won multiple awards including the Canadian Jewish Playwriting Competition, which she won for *The Great Divide*. She has had work produced at theaters around the world, including The Coronet Theatre (London, UK), The Alliance Theater (Atlanta, GA), The Segal Centre (Montreal, QC), Royal Manitoba Theatre Centre (Winnipeg, MB), and many more. She has written five solo shows that she has performed throughout North America. She has degrees from Brown University and Columbia University. She lives in Washington Heights, New York with her husband, dog, and cat. Find out more at: [alixsobler.com](http://alixsobler.com)

CONGRATULATIONS TO  
THE HAROLD GREEN JEWISH THEATRE COMPANY  
ON THEIR 14<sup>TH</sup> FANTASTIC SEASON

JEFF MORRISON

JM

FINE JEWELLERY

---

---

TURNING PRECIOUS METALS  
INTO PRECIOUS MEMORIES

DIAMONDS · PEARLS · COLOURED STONES  
GOLD · JUDAICA JEWELLERY · WATCHES  
CUSTOM RE-SETTING & DESIGNS



By appointment:

416 418 9700

[jeff@jeffmorrison.ca](mailto:jeff@jeffmorrison.ca) | [www.jeffmorrison.ca](http://www.jeffmorrison.ca)



*"Our passion and our commitment is what sets us apart from the others.*

*We invite you to experience how jewellery should be presented; in a relaxed, stress-free environment, where each and every visit is treated like it is the most important... because it is!" - Jeff Morrison.*

THE OFFICIAL JEWELLER OF THE HGJTC



# BIOS

---



## **OLIVIA DANIELS** (Assistant Director)

Olivia Daniels (she/her) is a Canadian director and actor. She holds a BFA in Drama from New York University's Tisch School of the Arts, where she studied at Playwrights Horizons Theatre School and The New Studio on Broadway. As a director: *Essential* by Ellie Moon, *The Krakow Chicken* for the BurlOak Theatre Group (New Play Festival Best Director Award) and the Toronto premiere of *Small Mouth Sounds* by Bess Wohl at The Red Sandcastle Theatre. As a performer: Beth in Merrily *We Roll Along* at NYU, and Maeve in the NYC premiere of *Blue Stockings* by Jessica Swale. Olivia is the co-founder of Artists in Residence, a theatre company created during the COVID-19 pandemic to support artists' mental health by focusing on community, connection, and collaboration. Upcoming: *The Storyteller* for the Hamilton Fringe Festival. Love and gratitude to Avery and the wonderful team of The Great Divide for a beautiful return to live theatre! [www.olivia-daniels.com](http://www.olivia-daniels.com)



## **BRIAN DUDKIEWICZ** (Set Designer)

Brian is an award-winning designer whose work has been seen across Canada and the United States. Other credits include: *Bad Jews* (Harold Green Jewish Theatre), *April Fools*, *Indecent*, *Million Dollar Quartet* (Segal Centre), *Kinky Boots*, *Newsies*, *Rocky* (Drayton), *The Last Five Years* (Neptune), *Titanic* (The Grand), *Never Not Once* (Theatre Aquarius), *Jukebox Hero* (Mirvish), *Into the Woods* (St. Petersburg Opera), *Hal&Bee*, *Room of my Own*, *Lifex3*, *Unseamly*, and many more (Off-Broadway). Brian holds a Bachelor in Architecture from McGill University, and an MFA in design from Yale University. [www.briandudkiewicz.com](http://www.briandudkiewicz.com)



## **SIOBHÁN SLEATH** (Lighting Designer)

Siobhán is a Lighting Designer with credits in Theatre, Opera and Dance. Her work has been seen in Canada, The United States, India, Sweden, Australia and the Czech Republic. She is very happy to return to Harold Green Jewish Theatre after a long shutdown. Her previous shows for the company include: *Becoming Dr. Ruth*, *Bar Mitzvah Boy*, *Brighton Beach Memoirs*, *The Times are a Changin'*, *The Jazz Singer*, *Stars of David* and *Therefore Choose Life*. She also Designs Lighting for: Theatre Aquarius, Shaw Festival, Canadian Opera Company, Stratford Festival, Arkansas Rep, Neptune Theatre, Alberta Theatre Projects, Thousand Island Playhouse, Adirondack Theatre Festival, Globe Theatre, Musical Stage Company, Buddies in Bad Times and Theatre Passe Muraille. [www.siobhansleathdesign.com](http://www.siobhansleathdesign.com)

# BIO

---



## **LYON SMITH** (Sound Designer)

Lyon is a Toronto based multidisciplinary theatre artist working as an actor, playwright/deviser, photographer and most notably as a sound designer. Select sound credits include: 5 seasons as the sound designer for *Canadian Stage's Shakespeare in the Park* as well as designing the productions *Venus in Fur*, *Liv Stein* and *Game of Love and Chance*. He was a deviser/actor and composer for Aluna Theatre's DORA nominated *what I learned from a decade of fear*, sound crafting and virtual pit band for Ecce Homo's multi nominated *Of a Monstrous Child: A Gaga Musical*, actor and musician in Tarragon Theatre's production of an *Enemy of the People*, creator and composer for the *Last Donnelly Standing* at Blyth in addition to designing productions of *Mary's Wedding*, *in the Wake of Wettlaufer* and *Truth be Told*. Lyon designed sound for clown duo Moro and Jasp with *9 to 5* and *Stupefaction*, *Venus' Daughter* for Obsidian theatre, *the Canadian* for Thousand Islands Playhouse, *Prairie Nurse* for Factory Theatre and *Pipeline* for Soulpepper.



## **ALEX AMINI** (Costume Designer)

Select theatre credits include: *The Wild Party* (Dora Nominee), *Grey Gardens* (Dora Nominee), *Onegin*, *Caroline or Change* and *Next To Normal*, (Dora Nominee); Musical Stage Co., *To Life*, *The Jazz Singer* and *Brighton Beach Memoirs*; The Harold Green Jewish Theatre, *Mary Poppins*, *Mamma Mia* and *Beauty and the Beast*; Port Hope Capitol Theatre. As always, thanks to Carmen for saving my life.



## **CRYSTAL SALVERDA** (Production Manager)

With over 30 years in the entertainment industry Crystal has been blessed to work across Canada and Internationally. She has worked with the Harold Green Jewish Theatre on *Tuesday's with Morrie*, *Sisters Rosensweig*, *Zero Hour*, *Bar Mitzvah Boy*, *Dr. Ruth* and *Actually*. Mostly you can find her touring with Ronnie Burkett Theatre of Marionettes. Other work experiences include working with Soulpepper Theatre Co. *Necessary Angel*, WYRD Productions, Marquis Entertainment, Calgary Stampede, and BaAM Productions to mention a few.



## **BARBARA MCLEAN WRIGHT** (Stage Manager)

Barb is thrilled to be doing her first show with HGJTC on such a moving production!! With over 30 years experience as a stage manager, she has worked for many theatre companies in Canada, the Caribbean and Germany including Ross Petty Productions, Mirvish, The Grand Theatre, Sudbury Theatre Centre, Magnus, Theatre Aquarius, Centaur, Theatre Orangeville, Theatre Collingwood, Lighthouse Theatre, Classic Theatre Festival, Drayton Entertainment, and The Foster Festival. Barb thanks Avery, David and Matt for their trust, the cast and production/design team for all their hard work and fun, and as always, her family and friends for their never-ending love and support. Enjoy!!

# BIOS



## KATIE FITZ-GERALD (Assistant Stage Manager)

Katie is thrilled to be joining the Stage Management team for *The Great Divide* as Assistant Stage Manager! She is a Toronto based ASM/SM and a graduate of Sheridan College's Theatre Production Program. Credits include- Stage Manager for: *The Killing & The Madness of Lady Bright* (The Shaw Festival), The Stephenville Theatre Festival, Canadian Tour of *Copellia* (Ballet Jörgen), *Hair* (Hart House Theatre). Apprentice Stage Manager: *Educating Rita* (Lighthouse Festival Theatre), *King Charles III* (Mirvish/ Studio 180), *The Adventures of Pinocchio* (Young Peoples Theatre), *SWEAT* (Theatre Aquarius) *Sherlock Holmes & The Raven's Curse*, *Gypsy* & various outdoor performances (The Shaw Festival). Thanks so much to her friends and family for the constant support over the past few years. Enjoy the performance!



LISTED  
**LOCALLY.**  
MARKETED  
**GLOBALLY.**

BRINGING TOGETHER  
BUYERS AND SELLERS  
FROM AROUND THE GLOBE.

**HK HARVEY KALLES**  
REAL ESTATE LTD., BROKERAGE

416.441.2888 | HARVEYKALLES.COM

LUXURY  
PORTFOLIO

LUXURY  
REAL ESTATE

Leading  
REAL ESTATE COMPANIES  
IN THE WORLD

FRACI

居外  
WORLDWIDE

# REFLECTIVE OF THE MODERN JEWISH EXPERIENCE



THE BARLIN-DANIELS  
EMERGING ARTISTS  
INITIATIVE

HAROLD GREEN  
JEWISH THEATRE COMPANY

The Barlin-Daniels Emerging Artists Initiative supports, nourishes and encourages the development of a new generation of theatre artists. Exploring and amplifying a diverse array of Jewish stories and perspectives, that is thoughtful, inclusive, and reflective of the modern Jewish experience. In partnership with Artists in Residence.

If you would like to support the Barlin-Daniels Emerging Artists Initiative,  
please call Matt Birnbaum at 416.932.9995 x 223

# A SHEYNEM DANK

HGJTC WOULD LIKE TO THANK THE FOLLOWING SPONSORS FOR HELPING TO MAKE OUR 2021 / 2022 SEASON A SUCCESS

SEASON SPONSORS



PRODUCER LEGACY SERIES SPONSORS

**TOBY AND SAUL FELDBERG & FAMILY**

*A GLOBAL CHILDREN'S HANUKKAH CELEBRATION*

**GERALD SHEFF AND SHANITHA KACHAN**

*THE GREAT DIVIDE*

**ROSALIE AND ISADORE SHARP**

*VITALY: AN EVENING OF WONDERS*

PRODUCTION SPONSORS



SUPPORTING SPONSORS

**THE JAY AND BARBARA HENNIK FAMILY FOUNDATION**



**ANNA AND LESLIE DAN**

**ELLY BARLIN-DANIELS**

**MARK STEINFELD**

**WENDY AND ELLIOTT EISEN**

**CARY GREEN**

**KATHY KACER AND IAN EPSTEIN**

**JOEL AND JILL REITMAN**

**LINDA MILLER AND JAY SILVERBERG**

**BARBARA AND LORNE BERNSTEIN**

**BARBARA AND GARY FOGLER**

IN KIND SUPPORT



**STAY TUNED FOR OUR EXCITING 2022 / 2023 SEASON. ANNOUNCEMENT COMING SOON!!**



## EXECUTIVE

PRESIDENT & CEO  
Clyde Wagner

DIRECTOR OF THE OFFICE  
OF THE CEO & BOARD  
RELATIONS  
Isabel Menanno

## SPECIAL PROJECTS

VICE PRESIDENT OF STLC  
REDEVELOPMENT  
Leslie Lester

## DEVELOPMENT

VICE PRESIDENT OF  
DEVELOPMENT  
Sandra Bellisario

DIRECTOR OF  
DEVELOPMENT  
Megan Kotze

SENIOR PROGRAM  
MANAGER, ANNUAL &  
LEADERSHIP GIVING  
Kathryn Liedeman

DEVELOPMENT  
COORDINATOR  
Lawrence Tan

## PROGRAMMING

VICE PRESIDENT OF  
PROGRAMMING  
Josephine Ridge

EDUCATION &  
ENGAGEMENT MANAGER  
Rachel Robbins

EDUCATION &  
ENGAGEMENT  
PROGRAMMING  
COORDINATOR  
Jasmine Vanstone

BOOKINGS MANAGER  
Courtney Voyce

PROGRAMMING  
COORDINATOR  
Ariana Shaw

SALES MANAGER  
Scott North

SOCIAL MEDIA  
SPECIALIST  
Uwakmfon Ukobo

## PRODUCTION

DIRECTOR OF PRODUCTION  
Kristopher Dell

SENIOR PRODUCTION  
MANAGER  
Zoe Carpenter

SENIOR PRODUCTION  
MANAGER  
Anthony (TJ) Shamata

SENIOR MANAGER, THEATRE  
SYSTEMS AND SPECIAL  
PROJECTS  
Bruce Bennett

PRODUCTION MANAGER  
Chris Carlton

PRODUCTION MANAGER  
Alicia Ho

PRODUCTION MANAGER  
Paul McKenna

## MERIDIAN HALL STAGE CREW IATSE LOCAL 58

HEAD ELECTRICIAN  
Richard Karwat

HEAD CARPENTER  
Steve McLean

HEAD OF PROPERTIES  
Marcus Sirman

HEAD SOUND OPERATOR  
Ross Tuskey

ASSISTANT CARPENTER  
David Baer

FLY OPERATOR  
Peter Cathers

ASSISTANT SOUND  
OPERATOR  
Zsolt Kota

ASSISTANT  
ELECTRICIAN - AV  
Chris Nadon

ASSISTANT  
ELECTRICIAN  
Jason Urbanowicz

## ST. LAWRENCE CENTRE FOR THE ARTS STAGE CREW IATSE LOCAL 58

PROPERTY MASTER,  
BLUMA APPEL  
Wes Allen

HEAD TECHNICIAN,  
JANE MALLETT  
Yunier Alvarez Penate

HEAD CARPENTER,  
BLUMA APPEL  
Jay Blencowe

HEAD ELECTRICIAN,  
BLUMA APPEL  
Benn Hough

HEAD SOUND TECHNICIAN,  
BLUMA APPEL  
Keijo Makela

## IATSE LOCAL 822

WARDROBE HEAD  
Susan Batchelor

## MERIDIAN ARTS CENTRE STAGE CREW IATSE LOCAL 58

HEAD TECHNICIAN,  
LYRIC THEATRE  
Aaron Dell

HEAD TECHNICIAN, GEORGE  
WESTON  
RECITAL HALL  
Russell Hawley

ASSISTANT HEAD  
TECHNICIAN, GEORGE  
WESTON RECITAL HALL  
Patrick Hales

HEAD TECHNICIAN,  
STUDIO THEATRE  
Grant Primeau

## MARKETING & COMMUNICATIONS

VICE PRESIDENT  
OF MARKETING &  
COMMUNICATIONS  
Jeff Rohrer

DIRECTOR OF MARKETING  
Stephanie Canarte

MEDIA RELATIONS OFFICER  
Grant Ramsay

CONTENT MARKETING  
MANAGER  
Vanessa Grant

## BOX OFFICE

DIRECTOR OF TICKETING  
SERVICES  
Tom Kerr

BOX OFFICE MANAGER  
Fran Holywell

BOX OFFICE MANAGER  
Liz Bragg

BOX OFFICE ASSISTANT  
MANAGER  
Sandie Chui

BOX OFFICE ASSISTANT  
MANAGER  
Thomas Quinlan

BOX OFFICE ASSISTANT  
MANAGER  
Holly Merkur-Dance

BOX OFFICE DUTY  
MANAGER  
Dorian Barton

## FINANCE & ADMINISTRATION

VICE PRESIDENT OF  
FINANCE & ADMINISTRATION  
William Milne

DIRECTOR OF FINANCE  
Thomas Grady

DIRECTOR OF FINANCE  
Hayde Boccia

CONTROLLER  
Michael Johnson

SENIOR ACCOUNTANT  
Sabrina Li

CLIENT SETTLEMENT  
SERVICES MANAGER  
John Kiggins

SENIOR PAYROLL MANAGER  
Alice Lin

PAYROLL SPECIALIST  
Gladys Torres

ACCOUNTING ASSISTANT  
Nelum Dissanayake

ACCOUNTING ASSISTANT  
Fiona Liu

OFFICE CLERK  
Charles Mayne

## INFORMATION TECHNOLOGY

DIRECTOR OF INFORMATION  
TECHNOLOGY  
David McCracken

SYSTEMS ADMINISTRATOR  
Chahat Khandhar

IT SUPPORT TECHNICIAN  
Michael Cadiz

VICE PRESIDENT OF  
HUMAN RESOURCES &  
ORGANIZATIONAL CULTURE  
Michelle Carter

HUMAN RESOURCES  
ASSISTANT  
Melissa Creighton

## OPERATIONS

VICE PRESIDENT OF  
OPERATIONS  
Matthew Farrell

DIRECTOR OF CAPITAL  
PROJECTS  
Edward Delavari

PROJECT MANAGER  
Luke Belfontaine

PROJECT MANAGER  
Kristan Burley

## PATRON SERVICES

DIRECTOR OF PATRON  
SERVICES  
Sean Tasson

PATRON SERVICES  
MANAGER  
Lynn Frenette

PATRON SERVICES  
MANAGER  
Derek Genova

PATRON SERVICES  
DUTY MANAGER  
Adam Walker

PATRON SERVICES DUTY  
MANAGER  
Bruna Pisani

PATRON SERVICES DUTY  
MANAGER  
Kelsey McGuigan

PATRON SERVICES DUTY  
MANAGER  
Lina Welch

EXECUTIVE CHEF  
Bruce Berga

## FACILITIES

CHIEF OPERATOR  
Rocco Lippa

FACILITIES MANAGER  
Jarryd Fish

BUILDING OPERATOR  
Robert MacLean

OPERATOR  
Evan Ramdin

STAGE DOOR SECURITY  
SUPERVISOR  
Omar Nurse

STAGE DOOR SECURITY  
Ryan Nerona

STAGE DOOR SECURITY  
Scott Spence

STAGE DOOR SECURITY  
Patricia Rudik

STAGE DOOR SECURITY  
Justin Grice

STAGE DOOR SECURITY  
Jason Duval

STAGE DOOR SECURITY  
Henry Fernandes

STAGE DOOR SECURITY  
Margreta Kristiansen

STAGE DOOR SECURITY  
Colin Dyble

MAINTENANCE SUPERVISOR  
Mohamed Zuhair

MAINTENANCE  
Roger Alves

MAINTENANCE  
Robert Bischoff

MAINTENANCE  
Catherine Patrick

MAINTENANCE  
Jose Rauda

MAINTENANCE  
Rosalina Silva

MAINTENANCE  
Rosa Victoria

MAINTENANCE  
(HOUSEKEEPING)  
Vivian Hije

BUILDING OPERATOR  
Roderick Padasdao

JUNIOR BUILDING  
OPERATOR  
Marciano Ramos

JUNIOR BUILDING  
OPERATOR, PART TIME  
Ehsan Rahman

HOUSEKEEPING  
SUPERVISOR  
John Vickery

HOUSEKEEPING  
Latoya Cushnie

HOUSEKEEPING  
Elliott Lewis

HOUSEKEEPING  
Mabel Liwag

HOUSEKEEPING  
Adam Sikora

HOUSEKEEPING  
Alton Simao

LIGHT DUTY HOUSEKEEPING  
Omar Nurse

STAGE DOOR SECURITY  
Alicia Surujbally

HANDY PEOPLE  
Matthew Pannell

HANDY PEOPLE  
Eduardo Costales

# HAROLD GREEN

---

## JEWISH THEATRE COMPANY

---

Co-Artistic Director .....	<b>AVERY SALTZMAN</b>
Co-Artistic Director .....	<b>DAVID EISNER</b>
General Manager .....	<b>MATT BIRNBAUM</b>
Graphic Design .....	<b>COSMIC ADVERTISING &amp; GRAPHIC DESIGN</b>
Online Marketing .....	<b>UPONLINE EMARKETING</b>
Season Printer .....	<b>INCREDIBLE PRINTING</b>
Box Office Manager .....	<b>LIZ BRAGG</b>

### BOARD OF DIRECTORS

**DANNY WEBBER** Co-President  
**DENE COHEN** Co-President  
**CARY GREEN** Vice President  
**JEFF MORRISON** Treasurer  
**MARK S. ANSHAN**  
**LORNE BERNSTEIN**  
**HOWARD BIDERMAN**  
**MIRIAM GREEN**  
**LINDA MILLER**

### ADVISORY COUNCIL

**ELLY BARLIN-DANIELS**  
**ALAN BIRNBAUM**  
**RABBI MICHAEL DOLGIN**  
**MICHAEL FELDMAN**  
**KEVIN GREEN**  
**HOWARD LICHTMAN**  
**SHEILA MCCARTHY**  
**DAVID MIRVISH C.M.O. ONT**  
**DAVID NAIRN**  
**JIM ROE**

**MOSHE RONEN**  
**MICHAEL RUBINOFF**  
**REVA STERN**  
**BRYNA WASSERMAN**  
**RABBI SHAWN ZEVIT**

---

## HAROLD GREEN



All the world's a stage and all of us want to be players. Each of us shapes a unique role in the scripts we write for ourselves. As for Harold, his role was in building safe, family-friendly havens. In addition, his interest in Talmud as well as Shakespeare led him to making the world a better place in many ways. Whether it was the time and expertise he devoted to Mount Sinai Hospital, to the Jewish Community Centre or to the labourers who worked in his industry, he was fully engaged in improving lives. He enjoyed going to the theatre and we suspect that he would have liked to have been on a stage. Vicariously, he is now on one. He would want you to enjoy his legacy.

— *The Harold Green Family*



# DONOR BENEFITS

LEVEL	SUPPORTER	MEMBER	BENEFACTOR	FRIEND	PATRON	PRODUCER	EXECUTIVE PRODUCER
<b>AMOUNT</b>	<b>\$118</b>	<b>\$360</b>	<b>\$500</b>	<b>\$1,000</b>	<b>\$1,800</b>	<b>\$2,500</b>	<b>\$5, 000</b>
Tax receipt	X	X	X	X	X	X	X
E-news alerts	X	X	X	X	X	X	X
Recognition in programmes	X	X	X	X	X	X	X
2 tickets for 1 Opening Night			X				
2 Opening Night Subscriptions				X			
4 Opening Night Subscriptions					X	X	
6 Opening Night Subscriptions							X
Invitations for 10 to a dress rehearsal						X	X
Autographed posters						X	X

## SUPPORT THE HGJTC

We appreciate donations of ANY kind. For more information about how to donate or to make your donation today, please call Matt Birnbaum at 416.932.9995 x 223 or visit [www.hgjewishtheatre.com](http://www.hgjewishtheatre.com)

Charitable Registration number: 85639 8557 RR0001

*Have a Group or Want to Host a Fundraiser at a Harold Green Jewish Theatre Company Event?*

**CALL 416.932.9995 X 224 FOR MORE INFORMATION.  
GROUPS OF 10 + SAVE 15%.**



# DONOR LIST

## FOUNDING FAMILY

The Harold Green Family,  
Miriam, Eric, Cary and  
Ronda, Kevin and Lisa,  
Robin Green and  
Jamie Purdon

## CHAI SOCIETY

The Azrieli Foundation  
Judy Klarman and Eric Bresler  
Anna and Leslie Dan  
Toby and Saul Feldberg  
Sheila and Murray Goldman  
The Families of David Green  
and Daphne Wagner,  
Karen Green and  
George Fischer,  
Donna Green and  
Michael Sanderson,  
Lindy Green and  
Barry & Laurie Green

Alan Greenberg  
Debbie and Warren Kimel  
Metropia  
The Robbins Family  
Rosalie and Isadore Sharp  
Shanitha Kachan  
and Gerald Sheff  
Fran and Edward Sonshine  
Eric and Leah Weisz  
and Family - Effort Trust  
Anonymous  
Barbara and Henry Bank  
Donna and Barry Bank  
Elly Barlin-Daniels  
and Peter Daniels  
Sarah and Morris Perlis  
Hinda and Allan Silber  
Dene and Glenn Cohen  
Annalee and Jeff Wagman  
Judi and Marshall Egelnick  
Joy Kaufman and Eric Cohen  
Esther and Victor Peters

## DIRECTORS

Anonymous  
The Azrieli Foundation  
Cary Green  
Cosmic Advertising  
and Graphic Design

## EXECUTIVE PRODUCERS

Richard and Elaine Borchiver  
Creative Image  
Communications  
Guild Electric Charitable  
Foundation

## PATRONS

The Brettler/Mintz Foundation  
The Jeremy and Judith  
Freedman Family Foundation  
Ellen Haspel  
Carolyn Lengyel  
Steven and Rodeen Stein

## FRIENDS

Barry and Donna Bank  
Howard and Ann Biderman  
Louise Cornblum  
Barry and Helen Goldlist  
Michelle Glied-Goldstein  
Harvey and Goldie Kestenberg  
Eddie and Harriet Rice  
Moshe and Dara Ronen  
Felix and Raisa Shuster  
Steven Sofer  
Carol Mitchell  
and Richard Venn

## BENEFACTORS

Barbara and Lorne Bernstein  
Dene and Glenn Cohen  
Rosylin and Gerold Goldlist  
Mervin and Myrna Lass Fund  
Bernice and Nate Leipziger  
Bill and Anne Lieberman  
Sean Mulcahy  
Nanci Turk  
Mark Waitman  
Steven Weinreib

## MEMBERS

Isaac and Marilyn Birenbaum  
Daniel Bowman  
Judy Coldoff  
Bruce Dean  
Kathy Kacer and Ian Epstein  
Arla and Zvi Litwin  
Marlene Richardson  
Cyndy Rosenthal  
Fern Smiley  
Steven Sofer  
Steven and Rodeen Stein  
Carol Strom  
Terry Walman  
Phil Weinstein

## SUPPORTERS

Anonymous  
Brenda Spiegler  
and Mark S. Anshan  
John Anthony  
Harvey and Ellen Ash  
Hazel Bader  
Philip Baer  
Carol Baker  
Sandy Posluns and Eli Barr  
Debbie Bergson  
Harry Berholz  
Myrna Berlin  
Miriam Bester  
Renee and Alan Birnbaum  
Kris Boyce  
Bobbie Lynn Brass  
Freda and Allan Brender  
Judith and Harold Bricks  
Michael and Ava Brodsky  
Marla Cappell  
Brenda Kane-Cipin  
May Cohen  
Stephen Cohen  
Jerry Colomby  
Howard Colton  
Esther Cooper  
Jerry Cooper  
Joanne Cooper  
Cherie and Mark Daitchman  
Rodica David  
Karen Davis  
Helen Eisen  
Leigh Eisenberg  
Maxanne Ezer  
Berna Feldman  
Debra Feldman  
Gordon and Ricki Fenwick  
Ron Forster  
Judy Franklin  
David Freeman  
Marcia Glick  
Sandra Goldberg  
Stuart Goodman  
Nomi Goodman  
Helene Green  
Susan Smyth  
and Jeffrey Gustin  
Doreen Gryfe  
Sheila Hecker  
Sonia and Yehudi Hendlar  
Marilyn Herbert  
Carol Koranyi

Harvey Kreisman, Janice  
and Howard Langer Fund  
Karen Leitner  
Olga Luftig  
Philip Ladovsky  
Janice and Howard  
Langer Fund  
Irving Laffer  
Beverly and Bernie Little  
Gert Ludwig  
Jordan Merkur  
Trudy Miller  
Carol Manilla  
Ellen Nash  
Gary Opolsky  
Lisa and Stephen Pinkus  
Lori and Steven Popper  
Dayle and Allan Rakowsky  
Esther Rosenholtz  
Joanne Rovet  
Susan Rubin  
Jeanne Salit  
George Saltzberg  
Frances Saltzman  
Elaine and Gary Sandor  
Josette Sassoon  
Lynn Saunders  
Abe Schwartz  
Esther Schwartz  
Dena Arback and Jay Shanker  
Thelma Shore  
Phillip and Brenda Silver  
Marilyn Sinclair  
Fern Smiley  
Linda Somers  
Elaine Sone  
Bonnie Stern  
Evelyne Suchter  
Randi and Jack Szymkowicz  
Brent Tkatch  
Rochelle Thompson  
Keren Fenwick  
and Saul Unterman  
Leonard Vanek  
Debbie and Jack Wasserman  
Gary Waters  
Deborah and Danny Webber  
Donna and Fred Webber  
Terry Weintraub  
Dianne Woodrow  
Glory Wortzman  
Belarie and Marty Zatzman

The Harold Green Jewish Theatre Company would like to thank all of our generous donors. Your passion and commitment to our theatre company, especially over the past two years has been the inspiration that allows us to continue to present world class productions such as this.

If you would like to make a donation, please call Matt Birnbaum at 416.932.9995 x 223. This donor lists encompasses the period from January 1, 2020 to April 19, 2022. If we have missed your name, please accept our apologies and contact Matt Birnbaum at 416-932-9995 ext 223 with any corrections.



The Chai Society is an exclusive group of donors who, through their generosity, will breathe continuing life into the HGJTC. By becoming part of this initiative, you are contributing to the only professional Jewish Theatre Company in Toronto. You can help to support a medium that can educate – not simply our own, but the greater community – inspire and celebrate the arts across generations, while providing a positive spotlight on the Jewish story and reflecting pride in our heritage. Our theatre company has been made a reality by the Harold Green family. Now we invite you and your family to participate in building the Canadian voice of Jewish theatre.

### CHAI SALON EVENINGS

This exclusive group will have access to live performances in private homes with well-known celebrities from Toronto and beyond. Whether musical, dramatic or literary, the salon evenings promise to be a unique inside look at theatre. The first evening was a salon with the Jersey Boys and Theresa Tovah.

### IMPACT OF YOUR GIFT

- A portion of your gift will support the operating costs of theatre and allow us to build a bridge to sustainability. Ticket prices do not cover all the costs associated with creating live theatre.  
Examples: rising costs of venues, marketing for theatre and travel for artists.
- Our Jewish values of honouring our seniors and educating our children are hallmarks of our mission. With your gift, we will pilot exciting programs with schools, both public and private, and work to bring theatre to places such as Baycrest and other retirement homes. To date we have been able to supplement a number of tickets for these populations, but we would like to establish youth programs on a continuous basis that will allow the next generation to taste Jewish art and explore the potential of our culture through a personal connection with drama and live theatre. Through programs such as In the Beginning: A Jewish Playwright's Festival, we will encourage and discover new Jewish Canadian playwrights.
- Because we plan on being here for the long term, we also wish to strategically "save for tomorrow", to ensure that programs started today will endure.

Become part of the Chai Society and achieve lifetime recognition for your founding support.  
For more information, please contact General Manager Matt Birnbaum at 416.932.9995 x 223.

### CHAI SOCIETY MEMBERS AS OF TODAY

The Harold Green Family, Miriam,  
Eric, Cary and Ronda, Kevin and Lisa,  
Robin Green and Jamie Purdon  
The Azrieli Foundation  
Anna and Leslie Dan  
Toby and Saul Feldberg  
Sheila and Murray Goldman  
The Families of David Green  
and Daphne Wagner,  
Karen Green and George Fischer,  
Donna Green and Michael Sanderson,  
Lindy Green and Barry & Laurie Green  
Alan Greenberg  
Debbie and Warren Kimel  
Metropia  
The Robbins Family  
Rosalie and Isadore Sharp  
Shanitha Kachan and Gerald Sheff  
Fran and Edward Sonshine  
Eric and Leah Weisz and Family - Effort Trust  
Judy Klarman and Eric Bresler  
Anonymous  
Donna and Barry Bank and Barbara  
and Henry Bank  
Sarah and Morris Perlis and Hinda  
and Allan Silber  
Elly Barlin-Daniels and Peter Daniels  
Dene and Glenn Cohen  
Annalee and Jeff Wagman  
Judi and Marshall Egelnick  
Joy Kaufman and Eric Cohen

PEARTREE CANADA IS  
PROUD TO SUPPORT THE  
IMPORTANT WORK OF THE

# Harold Green Jewish Theatre Company



## Boost your charitable giving

Learn more about flow through share donations to increase and accelerate your charitable giving at a lower after-tax cost. PearTree offers a unique and proven format and we are proud to support important causes across Canada.

To find out more visit [peartreecanada.com](http://peartreecanada.com)



PearTree

# VITALY: AN EVENING OF WONDERS

**"YOU FOOLED US!"**

– PENN AND TELLER

**"BRINGS ART TO LIFE"**

– THE HUFFINGTON POST



**JUN 7—  
JUN 21**

**CREATED BY AND STARRING** Vitaly Beckman

**GREENWIN THEATRE  
(5040 YONGE STREET)  
MERIDIAN ARTS CENTRE**

PRODUCTION SPONSOR



SUPPORTING SPONSORS  
ANNA AND LESLIE DAN  
ELLY BARLIN-DANIELS  
MARK STEINFELD

**HAROLD GREEN**  
JEWISH THEATRE COMPANY

TICKETS AVAILABLE AT THE BOX OFFICE OR CALL  
416.366.7723 OR VISIT [HGJEWISHTHEATRE.COM](http://HGJEWISHTHEATRE.COM)